

vUSAF NOTAM for Cope Thunder 2006 1 June – 7 August 2006

1. INTRODUCTION

1.1 Elements of the Virtual U.S. Air Force (vUSAF), Virtual U.S. Navy (vUSN), Virtual U.S. Coast Guard (vUSCG), U.S. Army Virtual (USAv), Royal Australian Air Force (vRAAF), Australian Virtual Royal Army (AvRA) and the Virtual Royal Netherlands Air Force (vRNLAf) will be operating helicopters and aircraft from Elmendorf AFB, Eielson AFB, Allen AAF Wainwright AAF and W-612. These organizations will conduct a wide range of tactical flying exercises in the Special Use Airspace in and around Eielson AFB. These operations will take place over the period 1 June – 7 August 2006, under the exercise name Cope Thunder.

1.2 Civilian and military operators are advised that due to the significant increase of military activity, delays can be expected on arrival and departure at the military airfields along with Anchorage IAP and Fairbanks IAP. Aircraft captains should familiarize themselves with Special Use Airspace.

1.3 Aircraft operating from airfields within the lateral confines of the exercise area may experience delays in climb to avoid activated Special Use Airspace.

1.4 Exercise activities will be conducted daily at any time, but will be more intense during the weekends.

2. AIRSPACE ARRANGEMENTS

2.1 To facilitate this exercise, Special Use Airspace will be established by this NOTAM.

2.2 The following areas will be active for the exercise (See Attachment 1 for visual overview):

- a. **BIRCH MOA**- Vertical Limits: 500' AGL - 5,000' MSL
- b. **BUFFALO MOA**- Vertical Limits: 300' AGL – 7,000' MSL
- c. **DELTA**- Vertical Limits: FL200 - FL500
- d. **EIELSON**- Vertical Limits: 100' AGL - FL500
- e. **FOX 1-3**- Vertical Limits: 5,000' AGL - FL500
- f. **PAXSON**- Vertical Limits: FL180 – FL500
- g. **VIPER A MOA**- Vertical Limits: 500' AGL – 10,000' MSL
- h. **VIPER B MOA**- Vertical Limits: 10,000' MSL – FL500
- i. **YUKON 1-4 MOA**- Vertical Limits: 100' AGL – FL500
- j. **YUKON 5 MOA**- Vertical Limits: 5,000' AGL – FL500
- k. **R2202**- Vertical Limits: SFC – FL600
- l. **R2205**- Vertical Limits: SFC – FL500

m. **R2211**- Vertical Limits: SFC – FL250

n. **AR719** (Inside Yukon MOA) Lateral Limits: N66°10.00' W145°05.00' to N66°10.00' W141°00.00' to N64°00.00' W141°00.00' to N64°00.00' W144°00.00' to N64°30.00' W146°00.00' to N65°23.00' W146°00.00' to beginning. Vertical Limits: 14,000' MSL – 17,000' MSL, FL240 – FL290.

o. **AR720** (Inside Fox MOA) Lateral Limits: N63°58.00' W148°00.00' to N63°56.00' W147°02.00' to N63°44.00' W146°30.00' to N63°42.00' W146°13.00' to N63°43.00' W145°54.00' to N62°17.00' W145°54.00' to N61°55.00' W148°50.00' to N62°27.00' W148°54.00' to N62°33.00' W148°48.00' to beginning. Vertical Limits: FL240 – FL290

p. **W612**- Vertical Limits: SFC – FL290

2.3 **ATCAA Altitude for MOAs:** FL180 – FL 310 (Up to FL 500 on request)

2.4 Aircraft are to enter and exit the area at the following points:

Name	MOA	Coordinates	FIX
APPEL	YUKON	N65 23.0 W146 00.1	FAI 027/62
AXSEM	YUKON	N65 00.0 W146 43.7	FAI 041/35
BUFLO	YUKON	N64 10.2 W144 41.2	BIG 040/29
CABIN	YUKON	N65 48.2 W145 31.8	FAI 017/87
MIZZI	YUKON	N64 22.1 W145 30.5	BIG 345/23
MUTLY	YUKON	N66 20.0 W144 53.6	FYU 116/17
PAGGI	YUKON	N64 31.3W146 09.5	EIL 082/25
BEYER	FOX	N63 57.0 W147 45.0	FAI 144/50
CRUZR	FOX	N62 18.0 W148 51.0	EDF 001/68
DIKEE	FOX	N63 35.0 W145 54.0	BIG 162/26
HOJOE	FOX	N62 21.4 W147 11.5	GKN 256/50
MIDWA	FOX	N62 32.0 W148 10.0	EDF 003/83
WELLE	FOX	N63 33.0 W148 15.0	FAI 157/75
BEYAR	EIELSON	N63 58.0 W147 45.0	FAI 144/50
FLAAT	EIELSON	N64 16.2 W146 53.4	FAI 109/43
SLICK	PAXON	N63 37.0 W145 19.5	BIG 126/25
YUKAN	AR719	N65 07.0 W146 00.0	FAI 040/54
BEYER	AR720	N63 57.0 W147 45.0	FAI 144/50

2.5 The following stereo flight plans to be used during the exercise:

AWACS

ID	Route
CT001	EDF BGQ HOJOE 6420N14054W/DELAY 4+00 CRUZR MATTA EDF
CT002	EDF BGQ FAI HOJOE 6313N14452W/DELAY 4+00 CRUZR MATTA EDF

TANKERS

ID	Route
CT010	EIL HAWGG BIG BUFLO EIL038020/DELAY 1+30 AR719 BIG BOGIE EIL
CT011	EIL HAWGG BIG BUFLO BIG185044/DELAY 1+30 AR720NE BIG BOGIE EIL
CT012	EIL HAWGG BIG188096/DELAY 1+30 AR720SW BOGIE EIL
CT013	EDF BGQ HOJOE BIG188096/DELAY 1+30 AR720NE HOJOE MATTA EDF

FIGHTERS

ID	Route
CT020	EIL FOX3 CABIN/DELAY 1+00 YUKON MOA/R2205 APPEL FALCO4 EIL
CT021	EIL DELTA2 MIZZI/DELAY 1+00 YUKON MOA/R2205 APPEL FALCO4 EIL
CT022	EIL ENN ENN165040 WELLE/DELAY 1+00 FOX MOA R2211 R2202 R2205 YUKON MOA APPEL FALCO4 EIL
CT023	EIL DROPR FLAAT/DELAY 1+00 R2202 YUKON MOA APPEL FALCO4 EIL
CT024	EIL EIL332017 AXSEM/DELAY 1+00 YUKON MOA R2205 R2211 EIL20 BOGIE EIL
CT025	EIL EIL332017 AXSEM/DELAY 1+00 r2205 YUKON MOA APPEL FALCO4 EIL
CT026	EIL FLAAT/DELAY 1+00 R2202 R2211 EIL20 BOGIE EIL
CT027	EDF BGQ HOJOE/DELAY 1+30 FOX MOA/R2205 HOJOE MATTA EDF
CT028	W612 JUNKY JOH HOJOE/DELAY 1+30 FOX MOA/R2205 HOJOE JOH JUNKY W612 (Note: For Carrier Aircraft Only)

TRANSPORTS (C-17, C-130)

ID	Route
CT030	FAI FAI55 APPEL/DELAY 1+00 YUKON MOA/R2205 APPEL FAI55 FAI
CT031	EDF SKE1 BGQ V438 FAI FAI55 APPEL/DELAY 1+00 YUKON MOA/R2205 MIZZI BIG V481 GKN V456 MATTA EDF
CT032	EDF SKE1 BGQ V438 FAI FAI55 APPEL/DELAY 1+00 YUKON MOA/R2205 BUFLO BIG V481 GKN V456 MATTA EDF
CT033	EDF SKE1 BGQ V456 GKN ALTEW BUFLO/DELAY 1+00 YUKON MOA/R2205 BUFLO BIG V481 GKN V456 MATTA EDF

CT034	EDF SKE1 BGQ V438 FAI FAI55 APPEL/DELAY 1+30 YUKON MOA/R2205 CRUZR SURES TAGER HYSON EDF
CT035	EDF SKE1 BGQ V456 UREKA HOJOE/DELAY 1+30 FOX MOA/R2202 CRUZR SURES TAGER HYSON EDF

2.6 vUSAF GCI Controllers should be operating during exercise hours for range control on 125.30.

2.7 The Administering Authority for areas described in para 2.1 thru 2.6 is the vUSAF.

2.8 These areas will be operational daily starting 1 June at 0001Z to 7 August at 2359Z as will the stereo flight plans be available for use.

3. FLIGHT PLANNING AND ROUTE LIMITATIONS

3.1 ATC will issue diversion clearances around active Special Use Airspace for flights in controlled airspace. Clearances will utilize radar monitoring to avoid active Special Use Airspace. Where an amended route is issued and NAVAID coverage is limited, pilots may request radar services to assist in navigation and terrain clearance.

4. MILITARY AIRCRAFT OPERATIONS

4.1 Within MOAs and Restricted areas, high-speed military jet aircraft will be operating on random tracks without civil ATC communications.

5. PRIORITIES

5.1 Every endeavor will be made to adjust exercise activities and minimize delays to facilitate transit of civil aircraft engaged in SAR, Mercy flights, emergency, or MED operations.

5.2 Clearances shall be issued to Customs/Coast Watch aircraft on priority tasks, irrespective of the status of the airspace involved, such that these flights are subject to minimum delay.

6. CANCELLATION

6.1 This NOTAM self-cancels on 7 August 2006 at 2359Z.

7. Further Information/

Official vUSAF Cope Thunder webpage: [Cope Thunder 2006](#)

Enquiries to be directed to:

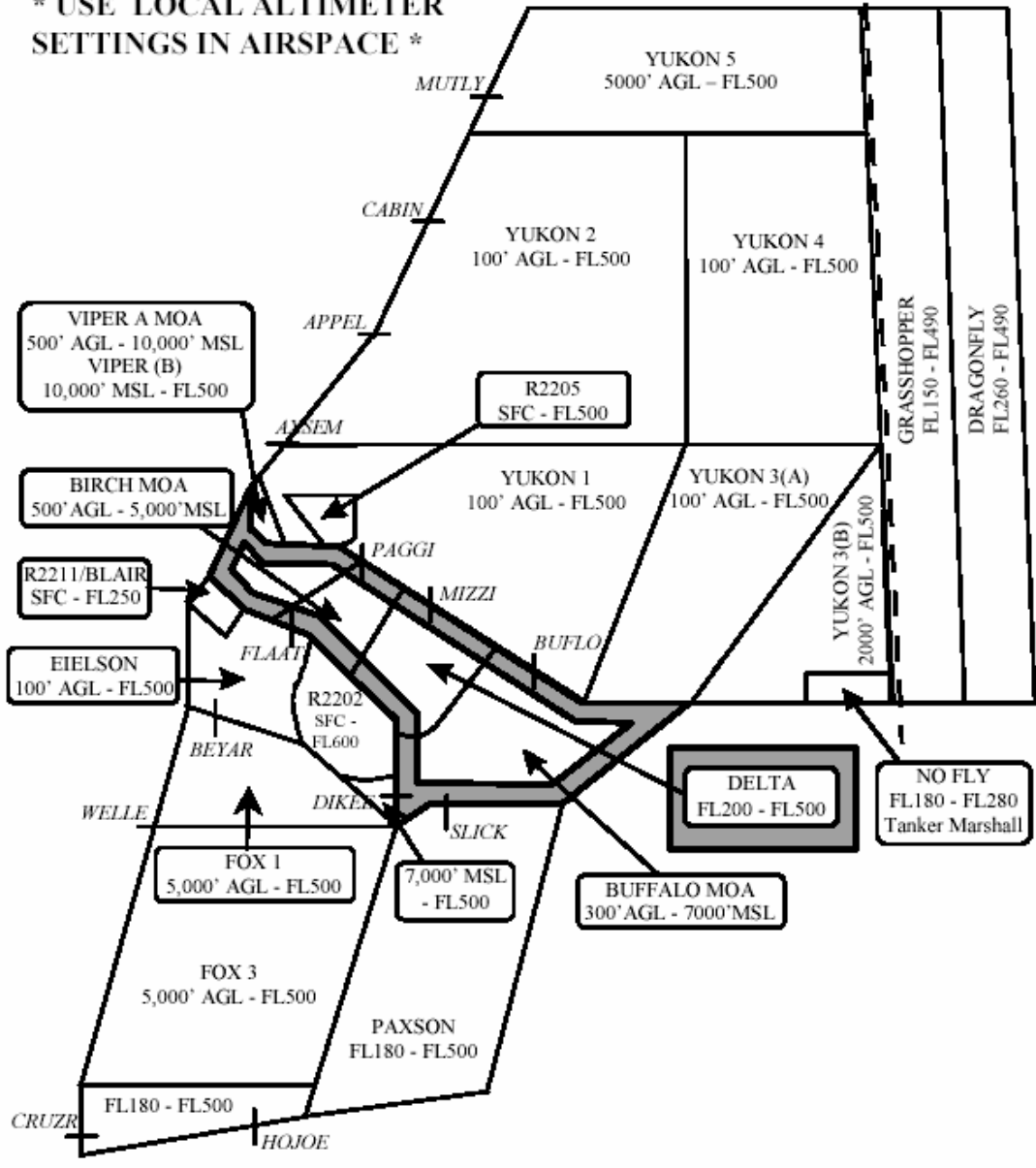
vLt Gen Todd Ruth, Cope Thunder Project Officer, vUSAF E-mail: truth@vusaf.org

8. DISTRIBUTION

By VATSIM-ZANARTCC Message Board NOTAMs facility

*** USE LOCAL ALTIMETER
SETTINGS IN AIRSPACE ***

USA | CANADA



Attachment 1